



PUBLIC MEETING

March 4, 2021

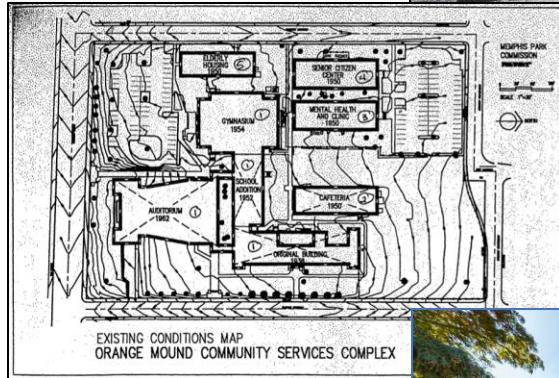
REDEVELOPMENT of HISTORIC MELROSE HIGH SCHOOL 843 DALLAS STREET



THE JOURNEY



Melrose High School, 1938
(Memphis Press-Scimitar, April 29, 1938))



FIRST SCHOOL

Cir. 1890 (Spottswood Avenue)

Named after subdivision – Melrose Station
First area school to open independently of area Black churches.

ROSENWALD SCHOOL

Cir. 1914 - 2nd Melrose

The little yellow school

1919 - made Memphis City School System, when Orange Mound is annexed into the City.

1938

3rd succession of Melrose School

Three story; 40,000 sq. Ft.

Campus additions - 1950's

Grades: 1st - 12th

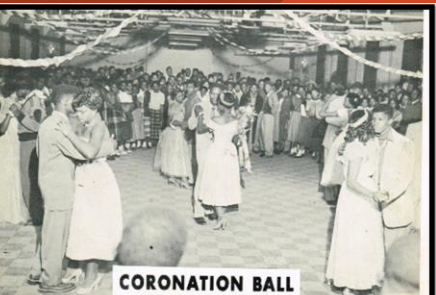
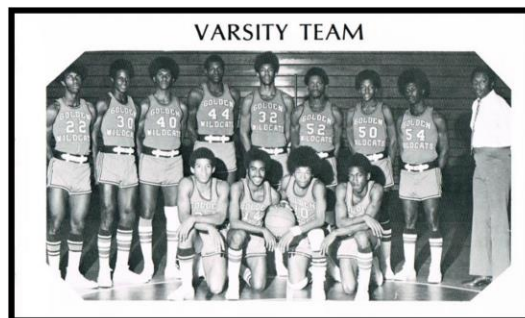
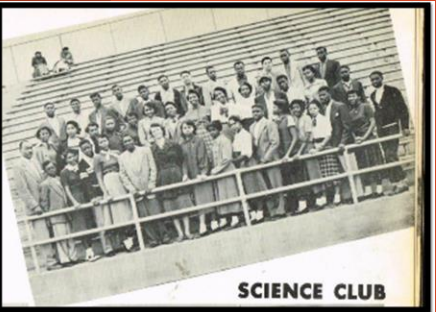
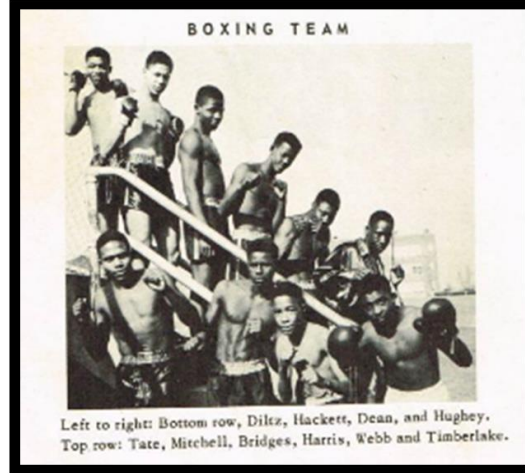
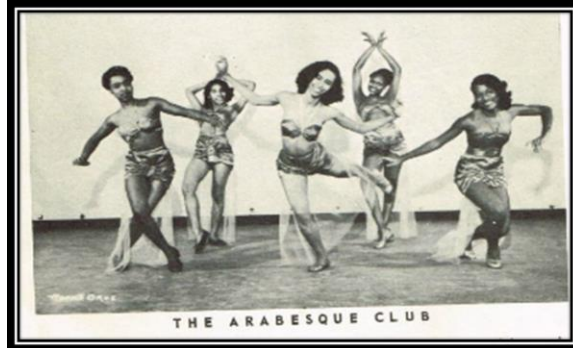
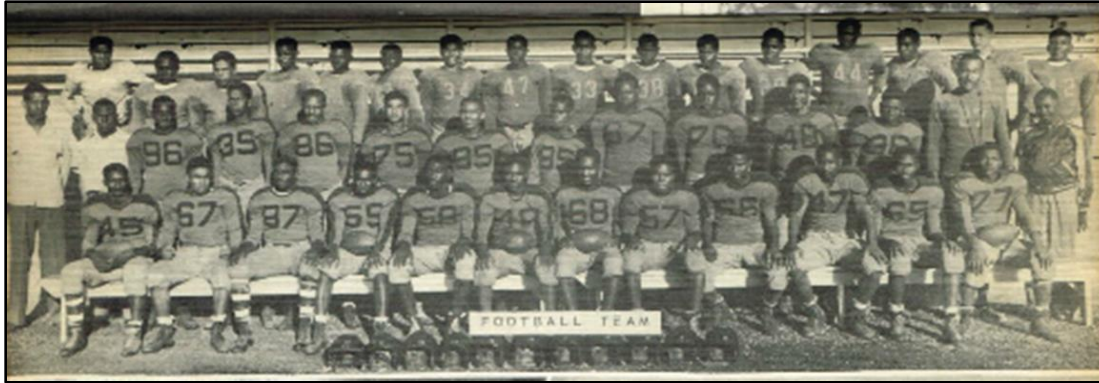
CLOSURE

1981 – Building closed

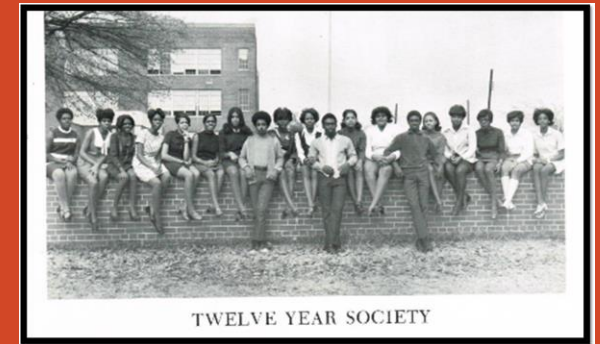
2001 – National Registry

2018 – City of Memphis Reactivation

THE GLORY YEARS



Community School
Heartbeat of the Neighborhood
1st -12th Grades
More than just a school
Seat of Learning
Citadel of Accomplishments



Source: Melrose Yearbooks

THE DECLINE



1972 – Grades 10-12 moved
Elementary grades moved
Students bused to other schools.

Decline in enrollment

40 years – Vacant

Fight to save the school

Photos: Courtesy of Walter Arnold – The Art of Abandonment



HOW WE GOT HERE

**Fight to Save Historic Melrose
Fairgrounds Redevelopment (2017)**

**Temporary Reactivation (2018)
Private Development Opportunity (2019)**

**Community Informed (2019/20)
Back to the Drawing Board (2020)**

**Accelerate Memphis (2021)
\$10M Investment**

THE FUTURE

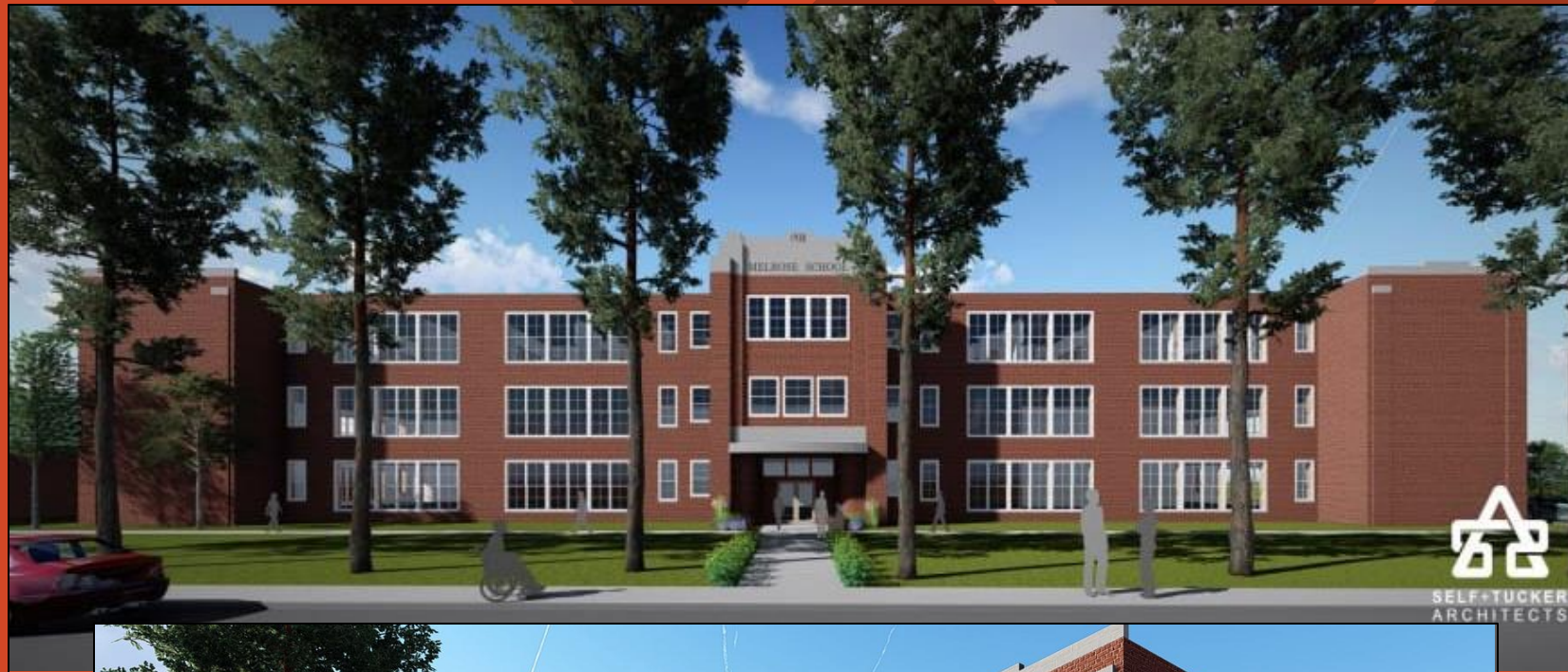
National Model

State of the Art

Repurposed Historic
Building

Multi-Use

Public Private Partnership



THE PLAN: PROGRAMMING



African American
Genealogy Center

Multi-Generational Programs

Youth Programs – The Arts

Cultural Research Center

Library

Neighborhood Nonprofits

Video/Audio Recording

Community Conversations

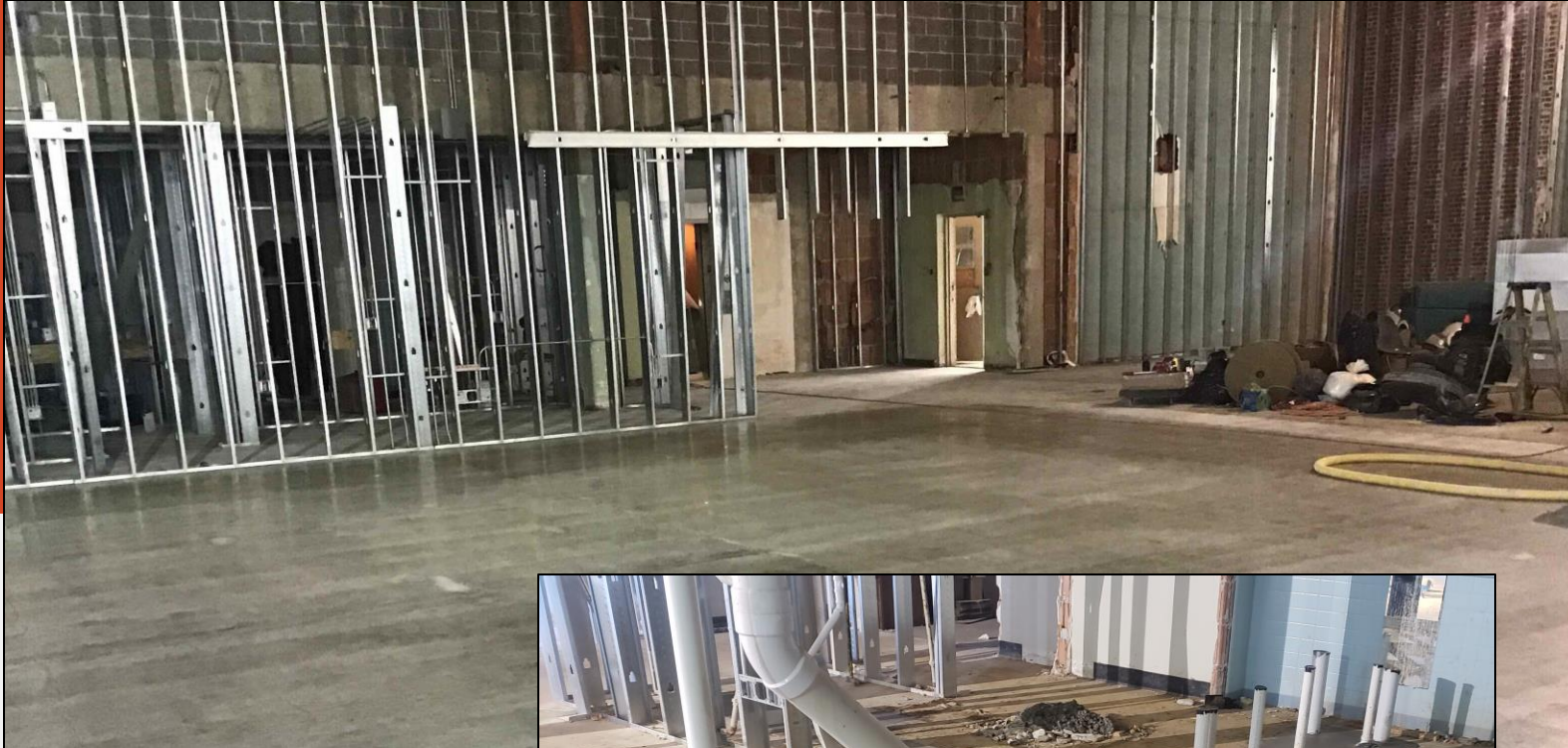
Oral History Collections

GENEALOGY CENTER



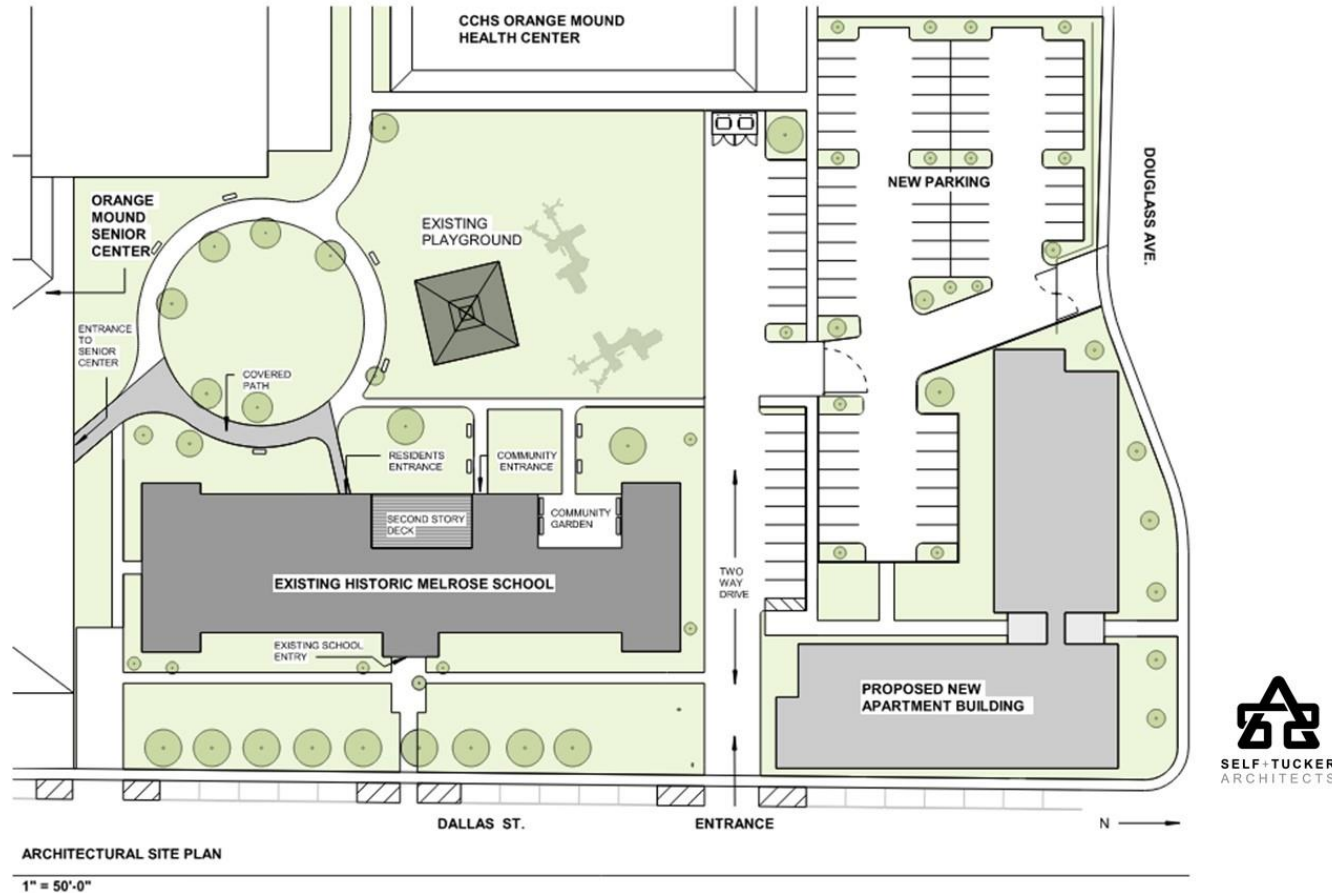
- Preservation
- Family Research
- Archives (Photos, Artifacts, Digitalization)
- Orange Mound Neighborhood
- National Model
- Resource Center
- Culture, Heritage & History
- Consultations offering assistance with researching your history
- Art Exhibits
- Technology
- Creative Arts (Storytelling, Spoken Word, Documentaries & more.

TIMELINE - DEVELOPMENT

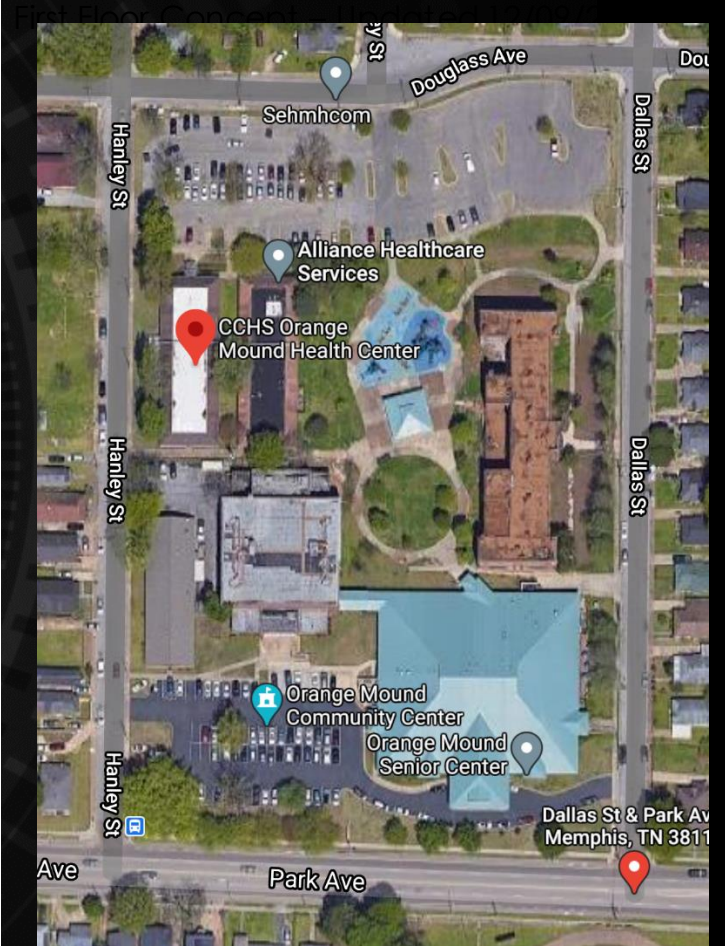


- 8-12 Months Design Period
- Groundbreaking Early 2022
- 18-Month Construction Period
- Goal: Genealogy Center & Library open by end of 2023.

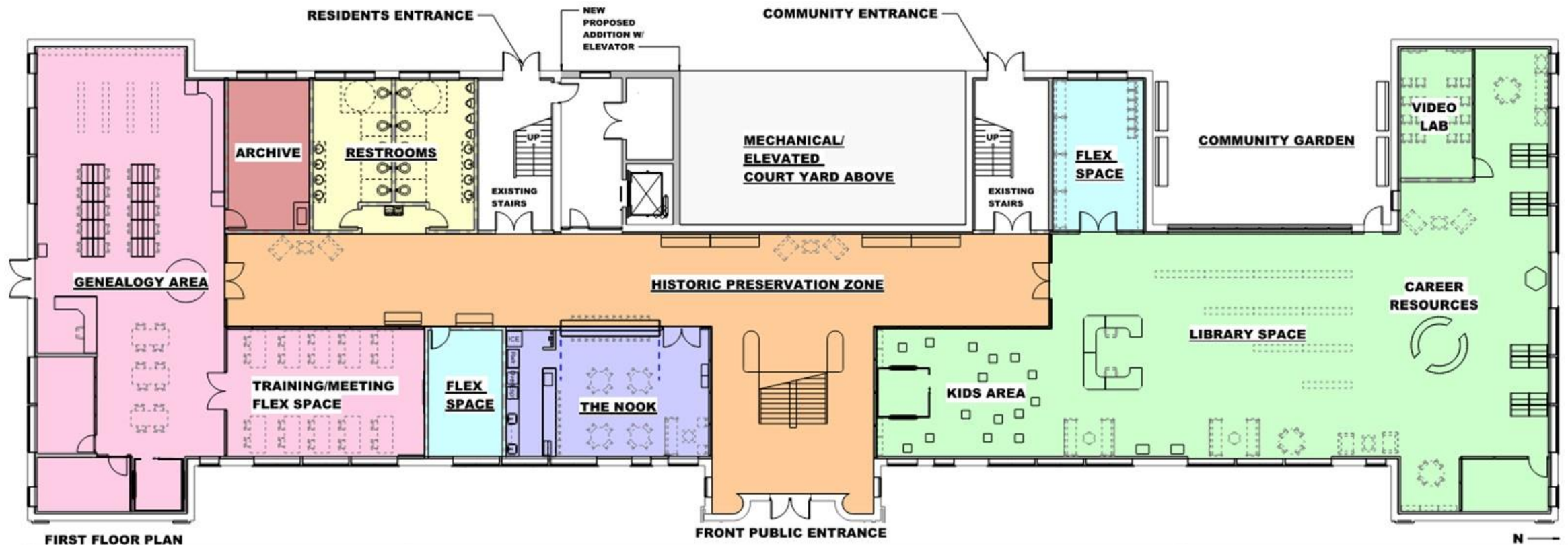
THE PLAN: CONSTRUCTION



Historic Melrose School Renovation
View: Architectural Site Plan



THE PLAN: CONSTRUCTION



FIRST FLOOR PLAN

SCALE: 1/8" = 1'-0"

SPACES

GENEALOGY AREA
TEMP CONTROLLED ARCHIVE
RESTROOMS
FLEX SPACE
REFRESHMENT NOOK/PARLOR
MECHANICAL
LIBRARY
HISTORIC CORRIDOR

SPACES TOTAL SF.

GENEALOGY AREA = 2,274
TRAINING MEETING SPACE = 688
TEMP CONTROLLED ARCHIVE = 345
RESTROOMS = 698
FLEX SPACE = 997
THE NOOK = 720
MECHANICAL = 1,265
LIBRARY = 4,587
HISTORIC CORRIDOR = 2,764

Historic Melrose School Renovation View: First Floor Plan



SECOND FLOOR PLAN

NEW PROPOSED ADDITION W/ ELEVATOR

JANITORS CLOSET

OUTDOOR DECK SPACE

LAUNDRY

RESIDENTS' FITNESS WALK + GALLERY

RESIDENTS' FITNESS WALK + GALLERY

LEASING/MANAGEMENT

UNIT-A

UNIT-B

UNIT-C

UNIT-C.1

ADA

N

SCALE: 1/8" = 1'-0"

A - 5 UNITS (ADA)
B - 2 UNITS
C - 2 UNITS
C.1 - 4 UNITS (Bigger)
D - 1 UNIT
TOTAL UNITS = 14

A - 600 N / 680 G
B - 450 N / 493 G
C - 542 N / 587 G
C,1 - 595 N / 644 G
D - 508 N / 550 G
TOTAL UNITS = 14

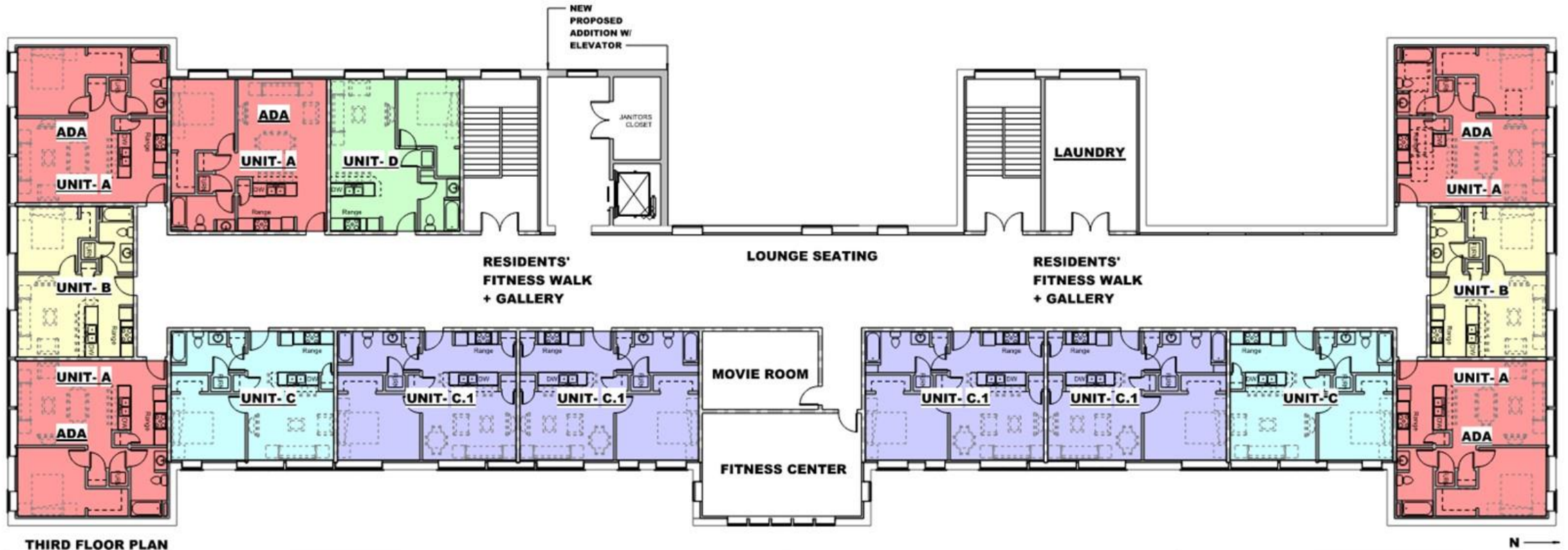
NET = N
GROSS = G

A - 3,000 N / 3,400 G
B - 900 N / 986 G
C - 1,084 N / 1,174 G
C.1 - 2,380 N / 2,576 G
D - 508 N / 550 G
TOTAL = 7,364 N / 8,136 G

NET = N
GROSS = G

SELF+TUCKER
ARCHITECTS

THE PLAN: CONSTRUCTION



UNIT TYPES

- A - 5 UNITS (ADA)
- B - 2 UNITS
- C - 2 UNITS
- C.1 - 4 UNITS (Bigger)
- D - 1 UNIT
- TOTAL UNITS = 14

UNIT TYPE SF.

- A - 600 N / 680 G
- B - 450 N / 493 G
- C - 542 N / 587 G
- C.1 - 595 N / 644 G
- D - 508 N / 550 G
- TOTAL UNITS = 14

NET = N
GROSS = G

UNIT TYPE TOTAL SF.

- A - 3,000 N / 3,400 G
- B - 900 N / 986 G
- C - 1,084 N / 1,174 G
- C.1 - 2,380 N / 2,576 G
- D - 508 N / 550 G
- TOTAL = 7,364 N / 8,136 G

NET = N
GROSS = G

Historic Melrose School Renovation View: Third Floor Plan



SELF+TUCKER
ARCHITECTS



Historic Melrose School Renovation
View: Looking at The Nook and Genealogy Center



Historic Melrose School Renovation
View: Looking at Genealogy Center Portion 1



Historic Melrose School Renovation
View: Looking at Genealogy Center Portion 2



SELF TUCKER



Historic Melrose School Renovation
View: Looking at The Library

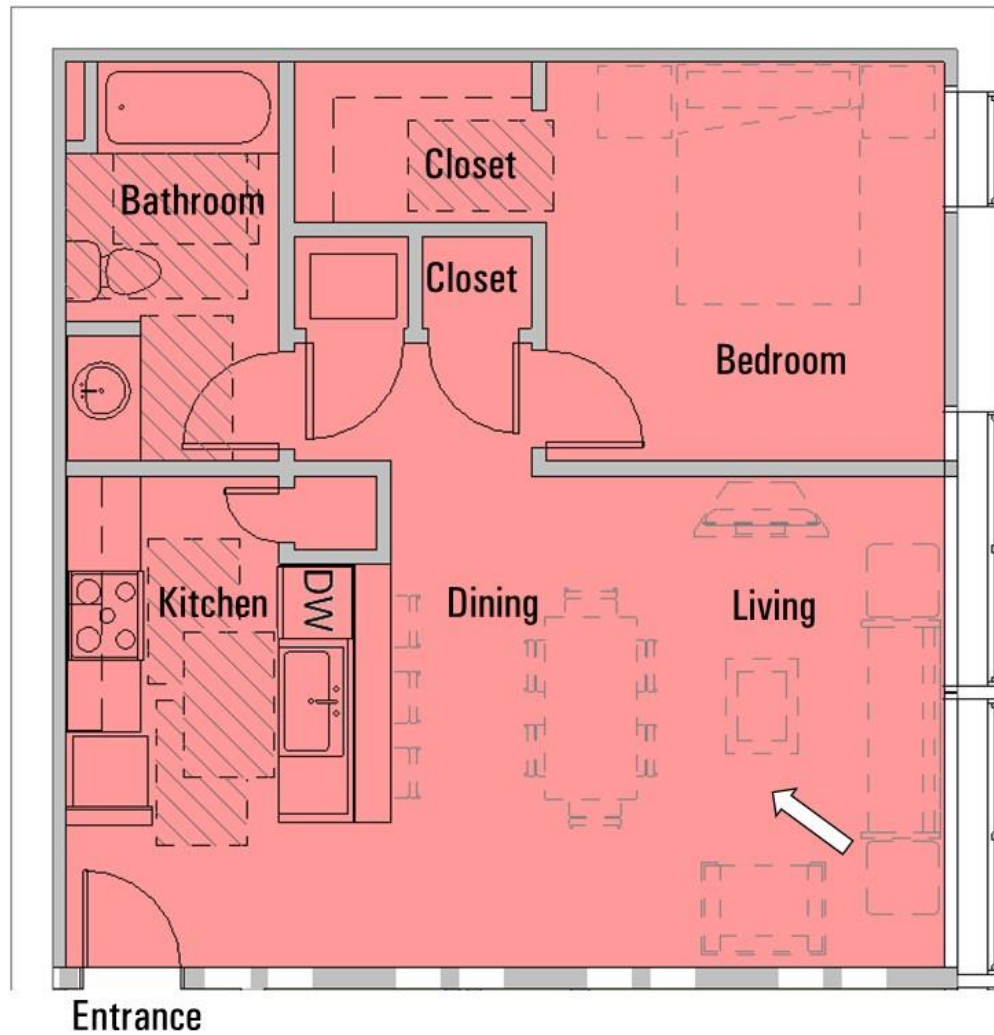


Historic Melrose School Renovation
View: 2nd Floor Corridor



SELF+TUCKER
ARCHITECTS

Historic Melrose School Renovation
View: ADA Unit



Render View

Historic Melrose School Renovation

View: ADA Unit Layout



Historic Melrose School Renovation
View: 2nd Floor Deck

Questions/Answers Period

FOR MORE INFORMATION CONTACT

Paul A. Young, Director

Paul.Young@memphistn.gov

